



Your Company's Future Depends Upon Advanced Manufacturing Talent.

Scarcity of skilled labor, talent shortages and the necessity of remaining competitive worldwide has become one of the most important issues facing leaders of the advanced manufacturing space and policymakers in Michigan.

Combating these problems and helping to make your company more successful is why your company should join the Michigan Advanced Technician Training (MAT²) program.



"ZF has been a MAT² employer since the beginning of the program, so I know that it can definitely meet employers' needs for advanced, highly skilled technicians. Investing in the program is an investment in our company's future, and I highly encourage other employers to consider joining the program moving forward as a way to help bridge their talent gap."

– Sophie Stepke, ZF Training Manager and
MAT² Strategic Steering Committee Chairperson

You Select. You Decide.

MAT² is the state's nationally heralded apprenticeship program developed by Michigan's global industry leaders and the Michigan Talent Investment Agency (TIA).

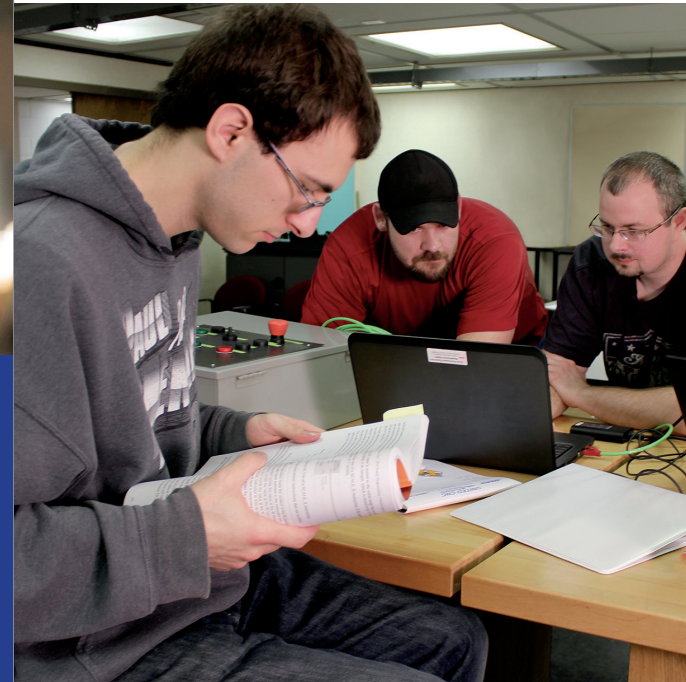
Your company selects candidates to alternate between semesters in the classroom and your worksite for three years. Your company gains a "homegrown" employee, one highly trained in your ways of doing business, on your equipment, with a commitment to work at least another two years for your company.

MECHATRONICS MAT² PROGRAMS

Program Locations: *Baker College of Cadillac, Henry Ford College, Kalamazoo Valley Community College, Oakland Community College*

CNC MANUFACTURING MAT² PROGRAMS

Program Locations: *Delta College, Henry Ford College, Kalamazoo Valley Community College*

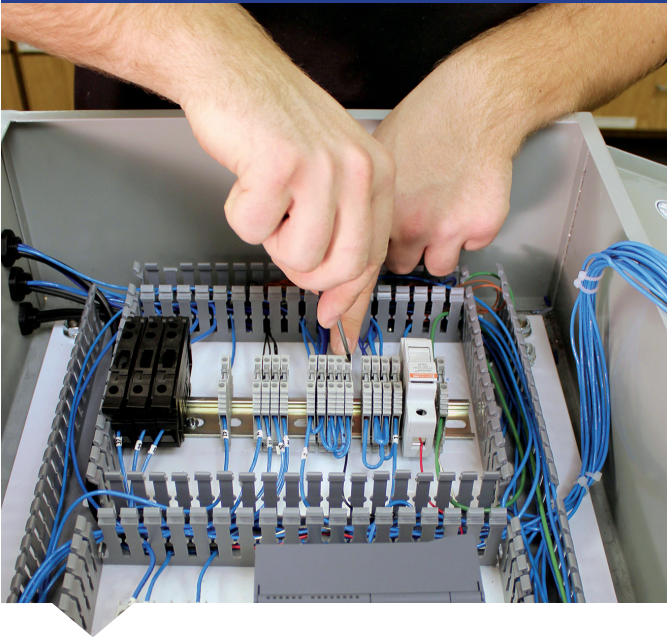


Make it happen.

BUILDING A NEXT-GENERATION WORKFORCE

Mechatronics and CNC Programs





Leaders In and Out of the Classroom.

MAT² has all the benefits of a traditional apprenticeship without the need for employers to recruit, educate, train and organize a program by themselves.

We produce highly trained leaders eager to pursue successful careers in advanced manufacturing. Students earn an associate degree upon successful completion of the program.

Next steps:

- Select students to hire.
- Pay their tuition, and a stipend, while they are taking college classes.
- Pay their wage while they work at your company.

MiTalent.org/MAT2

Grow Strategically With Better ROI.

MAT² is an exceptional opportunity for advanced manufacturers to reverse the widening skills gap and the loss of talent that comes with an aging workforce. By participating in MAT², your return on investment includes:

- Reducing recruitment and retention costs.
- Building loyalty in new employees who will have deep understanding of your company's protocols and expectations.
- Shaping prospective employees' educational and on-the-job training aspects through direct involvement in their academic and career track.
- Creating rigorously trained, capable and readily employable graduates who grow with your company.
- An opportunity for a \$5,000 grant for registering your student with the U.S. Department of Labor as a registered apprentice.

Ask Your Peers About MAT².

Many of Michigan's most successful manufacturers and industrial companies are participating in the MAT² program. For a current list of participating companies visit mitalent.org/MAT2.



Make It Happen for Your Business.

Interest in MAT² is soaring – more than 50 advanced manufacturers statewide have now joined MAT², and student participation has quadrupled since MAT² was introduced.

It's easy to learn more:

- Invite a MAT² representative to your workplace.
- Join a webinar with employers and MAT² experts.
- Attend a peer-to-peer employer presentation.

The Michigan Talent Investment Agency team is committed to Michigan's manufacturers and is ready to work with prospective employers every step of the way.

MAT² is promoted by:

- Michigan Manufacturers Association
- Michigan Manufacturing Technology Center
- Michigan Economic Development Corporation
- Michigan Works! Association

QUESTIONS?

Visit: MiTalent.org/MAT2

Email: MAT2@Michigan.gov

Call: 888-522-0103

